

Mepitel® Application Guide

How to use Mepitel:



1. Clean the wound if necessary.
2. Ensure peri-wound skin is dry.
3. Remove smaller release film.
4. Apply **Mepitel** to the wound, allowing for at least 1 cm overlap of wound edges. Larger wounds may require more overlap.



5. Remove upper release film.

Note: Moisten finger tips of gloves with normal saline for easy handling of **Mepitel**



6. Gels or topicals may be applied over **Mepitel** as needed.
7. Place absorptive dressing over **Mepitel** dressing (i.e., 4 x 4 gauze, ABD pad) and a retention dressing, if needed, (i.e., **Tubifast**® or roll gauze).

Areas of Use:



Mepitel used on a second degree burn.



Fixation of meshed grafts using Mepitel.



Fixation and protection of skin tear.

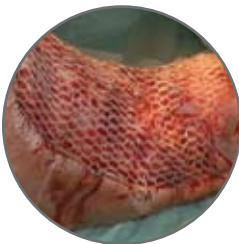


IV Extravasation and Infiltration

Epidermolysis Bullosa



Skin graft



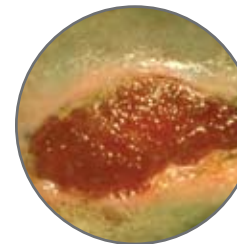
Injury to Finger



2nd Degree Burn



Primary Wound Protection



SafetaC
TECHNOLOGY

MÖLNLYCKE
HEALTH CARE

SOFT SILICONE WOUND CONTACT LAYER

Mepitel®



SafetaC
TECHNOLOGY

Mepitel Ordering Information

Packaged sterile in single packs.

Product Code	Size	Pieces/box	Pieces/case	HCPCS
290590	2" x 3" (5 x 7.5 cm)	10	60	A6206
290790	3" x 4" (7.5 x 10 cm)	10	50	A6206
291090	4" x 7" (10 x 18 cm)	10	50	A6207
292005	8" x 12" (20 x 30 cm)	5	30	A6208

BENEFITS OF MEPITEL® WITH SAFETAC TECHNOLOGY

- Prevents newly formed delicate tissue from being damaged
- May remain in place for several days which ensures undisturbed wound healing
- Enables less frequent dressing changes
- Does not adhere to moist wound beds but to dry tissue only
- Minimizes trauma and pain during dressing changes
- Transparent for easy wound inspection
- Conforms well to body contours, promoting patient comfort during wear

WEAR TIME: UP TO 10 DAYS

INDICATIONS

Mepitel is designed for a wide range of wounds such as:

- Skin tears
- Skin abrasions
- Surgical incisions
- Second degree burn
- IV Infiltrates
- Bullous diseases
- Blistering
- Lacerations
- Partial & full thickness grafts
- Diabetic ulcers
- Venous and arterial ulcers
- Epidermolysis Bullosa

Precautions:

- The wound should be inspected for signs of infection according to clinical practice. Consult a healthcare professional for the appropriate medical treatment.
- Mepitel used on burns treated with meshed grafts: avoid placing unnecessary pressure upon the dressing.
- Mepitel used after facial resurfacing: avoid placing pressure upon the dressing. Lift and reposition the dressing at least every second day.
- When used on bleeding wounds or wounds with high viscosity exudate, Mepitel should be covered with a moist absorbent dressing pad.
- When Mepitel is used for the fixation of skin graft and protection of blisters, the dressing should not be changed before the fifth day post application.

WARNINGS: When Mepitel is used on burns treated with meshed grafts or after facial resurfacing, imprints can occur if the product is not used properly.